

STUDY ABROAD INFORMATION SHEET

Name of Institution	University of Warwick
Vice Chancellor	Professor Nigel Thrift
Website address	www.warwick.ac.uk
University Switchboard Number	00 44 (0) 24 7652 3523
Accommodation Office	Warwick Accommodation Senate House 00 44 (0) 24 7652 3772 00 44 (0) 24 7652 4887 (fax.) Email: accommodation@warwick.ac.uk
INSTITUTIONAL CONTACT DETAILS	
Address	International Office The University of Warwick University House, Kirby Corner Road COVENTRY, UK CV4 8UW 00 44 24 (0) 7652 4337 (fax.)
Erasmus Institution code (if required)	UK COVENTR01 [28305-IC-1-UK-ERASMUS-EUCX-1]
Assistant Director International Office (Study Abroad & Warwick IFP)	Helen JOHNSON H.J.Johnson@warwick.ac.uk 00 44 (0)24 7657 5598
Study Abroad Manager	Amanda ASHBY a.j.ashby@warwick.ac.uk 00 44 (0) 24 7652 3705
Warwick International Foundation Programme	Tom SUCH Thomas.Such@warwick.ac.uk 00 44 (0) 24 7657 4055
Senior Study Abroad Co-ordinator	Rachel CUDDIHY R.Cuddihy@warwick.ac.uk 00 44 (0) 24 7655 1943
Study Abroad Co-ordinator (outgoing_Europe)	Ben MEERING erasout@warwick.ac.uk 00 44 (0) 24 7657 4429
Study Abroad Co-ordinator (incoming_Europe)	Tarla PATEL erasmus@warwick.ac.uk 00 44 (0) 24 7657 5567
Study Abroad Co-ordinator (Worldwide)	Amy THOMPSON exchange@warwick.ac.uk 00 44 (0) 24 7652 4133
Warwick International Foundation Programme Co-ordinator	William JOHNSON ifp@warwick.ac.uk 00 44 (0) 24 7652 3003
Warwick International Foundation Programme Co-ordinator	Alison DURHAM ifp@warwick.ac.uk 00 44 (0) 24 7657 4336



**Other
Important
Contacts:**

International Office	www.warwick.ac.uk/go/international
Study Abroad	www.warwick.ac.uk/go/studyabroad
Warwick International Foundation Programme	www.warwick.ac.uk/go/warwickifp
Accommodation	accommodation@warwick.ac.uk
Enrolment	enrolment@warwick.ac.uk
Student Finance	studentfinance@warwick.ac.uk
Orientation	orientation@warwick.ac.uk
Immigration	immigrationservice@warwick.ac.uk
Module Catalogue	http://www2.warwick.ac.uk/services/academicoffice/quality/modules

Term Dates

2014/2015

Autumn Term

Monday 29 September 2014 – Saturday 6 December 2014

Spring Term

Monday 5 January 2015 – Saturday 14 March 2015

Summer Term

Monday 20 April 2015 – Saturday 27 June 2015

2015/2016

Autumn Term

Monday 5 October 2015 – Saturday 12 December 2015

Spring Term

Monday 11 January 2016 – Saturday 19 March 2016

Summer Term

Monday 25 April 2016 – Saturday 2 July 2016

**Application
Dates**

October 2014 starters

Nominations online @:

<http://www2.warwick.ac.uk/study/studyabroad/institutions/nominations/>

Applications:

Online application form opens

Closes for October starters

Closes for January starters

Accommodation

Deadline

Term Dates: 2014/2015

Autumn Term

Monday 29 September 2014 – Saturday 6 December 2014

Spring Term

Monday 5 January 2015 – Saturday 14 March 2015

Summer Term

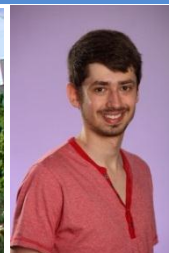
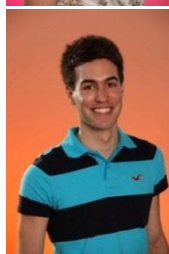
Monday 20 April 2015 – Saturday 27 June 2015

1 February 2014

31 May 2014

30 September 2014

31 July 2014



Welcome to Warwick!

Essential information for incoming students

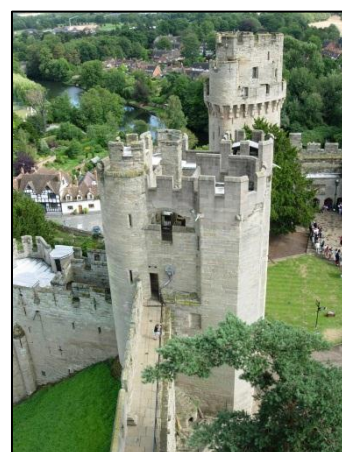
Where we are: Coventry and Warwickshire

Situated in the heart of England, the University of Warwick is surrounded by beautiful and historic countryside. Its central location also makes it an ideal base for exploring the rest of the UK, with easy access to trains and motorways. Central London is only an hour and ten minutes away by frequent, direct express train service, making it easy to visit the capital for a day trip or the weekend.

The university campus is located right on the edge of the city of Coventry, about three miles from the city centre. With a population of over 300,000 people, Coventry is the 11th largest city in the UK and famous for its three spires, ribbon industry, watchmaking, motor manufacturing, innovative technologies, world stage events and excellent transport links. The beautiful mediaeval ruins of Coventry Cathedral are situated side-by-side with the new Coventry Cathedral; the inspiration for a ministry of peace and reconciliation that has reached out across the entire world.

Warwick, the nearby historic and picturesque county town is dominated by its famous castle. On a dramatic site overlooking the River Avon, first fortified a thousand years ago, Warwick Castle is the finest mediaeval fortress in Great Britain, and is set in 24 hectares of beautiful grounds and gardens. It is one of the country's top attractions. Stratford-upon-Avon is of course, famous the world over as the birthplace of William Shakespeare, and is only fifteen miles from the University. There is an endless amount to do in Stratford-upon-Avon, from a tour of Shakespeare's birthplace to trips on the River Avon by canal barge or rowing boat. Attending a performance at one of the Royal Shakespeare Company's three theatres is a must and the International Office runs theatre trips to Stratford-upon-Avon throughout the year.

Pictures: the ruins of old Coventry cathedral and Warwick castle.



Campus life

The University of Warwick has a lively, cosmopolitan campus with its own shops, banks, bars and restaurants, making it an exciting place to live and work with everything you could need close at hand.

For more information, head to http://www2.warwick.ac.uk/about/profile/essential_warwick_2013_web.pdf or look for @warwickuni on twitter.

The community

There is a great sense of community at Warwick – the campus is home to students and staff from over 120 different countries representing a diversity of backgrounds, but also provides a great resource for the local community, with excellent facilities open to the public such as Warwick Arts Centre and the University Sports Centre.

The environment

The campus occupies 290 hectares on three adjacent sites: Central campus, Gibbet Hill campus and Westwood campus. These are characterised by pleasant lakes and luscious woods, magnificent flowers and charming landscaped gardens. But whilst the campus has much greenery to boast, inside the buildings, ground-breaking research is taking place and academics and students are working together to further their knowledge and work towards new academic objectives and goals.





Student life at Warwick

Central to most students' experience is the Students' Union, one of the largest and most active in the UK. Run by students for students, the Union coordinates an extensive program of sporting and social activities. The impressive (and newly extended) Union Building runs a nightly entertainment program, and has its own nightclub, as well as a number of bars and restaurants.

172 student societies are on offer, catering for all interests from the academic to the religious, the political to the purely social. Budding journalists can also get involved with the award-winning student newspaper - the Warwick Boar - or the campus radio station. Warwick has excellent on-campus sporting facilities, making it possible to take part in a wide range of indoor and outdoor sports. Almost all facilities are free for students, and include two indoor heated swimming pools, indoor sports halls, fitness rooms, squash courts, and all-weather outdoor pitches for a wide range of sports such as football, cricket, or hockey. The University's Sports Federation has seventy-three clubs catering for all standards, and covers sports as diverse as ballroom dance, American football, hang gliding, rowing, snooker, and snowboarding. Find out more at www.warwick-su.com or http://issuu.com/barrman7/docs/brochure_final/.

The University Arts Centre is the largest performing arts centre of its kind in the UK outside of London. It is the focus of cultural life not only on campus but also for the local region, with more than a quarter of a million visitors a year. It offers an outstanding program of theatre, music, opera and dance, attracting internationally acclaimed performers from all over the world, as well as an adventurous film program. Students can also take part themselves in one of the many campus music or drama societies, which stage regular performances at the Arts Centre.

Accommodation - both on and off campus

The campus has over 6,200 bedrooms. Each of the campus residences is fully-managed and has residential tutors and a warden who looks after the welfare of the residents. All rooms are self-catering. The rooms are within walking distance of the academic buildings and library. All rooms are single study bedrooms and many have their own en suite bathrooms. Internet access is available in all on campus accommodations. Off campus accommodation in shared houses and flats is available in nearby Coventry, Royal Leamington Spa, and Kenilworth. The deadline for accommodation applications is 31 July each year. More information is available at www.warwick.ac.uk/services/accommodation.

Health issues

The University has a National Health Service (NHS) Health Centre located at the heart of campus. We encourage all students living on campus and in the off-campus catchment area to register with a doctors' practice in the Health Centre. You will need to register with the Health Centre once you arrive at the University. Students must be registered in order to use the Health Centre, although staff may be able to assist non-registered people in emergencies. www.uwhc.org.



Academic information

Academic ranking

The University of Warwick has developed from a Greenfield site into one of the UK's most successful universities, with an international reputation for academic excellence in both teaching and research. It is consistently ranked in the top ten institutions in national evaluations of academic standards. QS ranked Warwick as third in the world in the QS Top 50 under 50, and within the UK, The Guardian ranked the University 10th in 2013. Warwick is the number one target for graduate employers according to *The Graduate Market in 2013*, by High Flyer Research.

Teaching

As an undergraduate visiting student, you will be taught by regular members of faculty who divide their time between teaching and research and whose lectures will challenge your understanding of any given subject. New research discoveries flow into the content of the teaching in your undergraduate modules. Warwick has a population of about 23,000 students, of which over 8,000 are international, establishing it as one of England's most diverse universities.

What can you study?

Exchange and Erasmus students are welcome to study in any of the University's academic departments. All the courses available to you form part of the Honours Degree Programme at Warwick, and are taught by members of the university's academic staff. In all their lectures, seminars and practical work, exchange students are fully integrated with degree-program students, mainly from the UK but also from other countries. All visiting students also have a personal tutor or academic advisor who is there to offer advice on academic or any other matters while the student is at Warwick.

Academic credit and modules

Academic credit at the University of Warwick is measured in CATS points. A full module load for undergraduate students at Warwick is normally 120 CATS points - usually four 30 CATS modules per year. The majority of these modules is single-weighted 30 CATS modules, and run for the full academic year.

Visiting students are not able to take less than three single-weighted modules. Some departments may offer second- or third-year specialist "double-weighted" modules worth 60 CATS, in which case a full course load would be one 60 CATS module and two 30 CATS modules. Students in the Science Faculty may find that a full module load is made up of a larger number of modules, each carrying a lower weighting (a smaller number of CATS points), some of which will only be taught in one term.

For students coming for part of the year, it is advised that an autumn term's study is worth 40% of full-year credit, whereas study for spring and summer terms would constitute 60% of the credit for a year. You will need to discuss your final module selection and load with your home school academic advisor. We suggest that you initially gain approval for 6-8 modules at Warwick, to allow for maximum flexibility in time tabling, and for changes in module availability.

Course load

Most exchange students are required to take a full course load (i.e. 120 CATS points for a full academic year, or part-year equivalents) while at Warwick. Exceptions are sometimes made if English is not your first language, or depending on your home university's stipulations.

Grading

At Warwick, grades of 70+ are equivalent to first class honours (A and A+ in American grades); 60+ are upper second class (B to A-); 50+ are lower second class (B- and B); and 40+ are third class honours (C-, C and C+). Below 40 marks is a fail grade (D or F).

